

# **BB Vault Operator's Manual**

# Table of Contents

<b>Section 1: Introduction .....</b>	<b>1</b>
Introduction.....	1
Installation.....	1
Running BB Vault for the First Time .....	1
Registration.....	2
<b>Section 2: BB Vault Main Page.....</b>	<b>4</b>
Message Window.....	4
Menu and Tool buttons .....	4
<b>Section 3: Download .....</b>	<b>6</b>
<b>Section 4: Upload .....</b>	<b>7</b>
<b>Section 5: ComPort Settings .....</b>	<b>8</b>

## Section 1

## Introduction

### Introduction

BB Vault provides the capability to download all programmable “B Code” parameter settings from a Beta LaserMike BB1000 Control Unit and save them to a file on a PC. Saved settings can then be retrieved from the file and uploaded back to the BB1000.

### Installation

Although BB Vault creates a number of files when it is run, there is only one file needed for installation. To install the BB Vault software, create a directory on the C: drive named C:\BB Vault and copy the file named BBVault.Exe to that directory

To run BB Vault, click Run on the Windows Start Menu and select C:\BB Vault\BBVault.Exe, double click C:\BB Vault\BBVault.exe from within Windows Explorer, or create and use a shortcut on the Windows desktop.

Connection of the PC to the BB1000 must be via serial port CON8 on the BB1000. Refer to the BB1000 Operator’s Manual for more information regarding the CON8 serial port.

### Running BB Vault for the First Time

The first time BB Vault is run, the communication parameters of the PC are defaulted to ComPort 1, 9600 baud, no parity, 8 data bits, and 1 stop bit (see Section 5: ComPort Settings).

Be sure to match the BB1000 serial port configuration (refer to the BB1000 Operator’s Manual) to the ComPort settings of BB Vault.

Any changes made to the BB Vault ComPort Settings will be saved to disk and retrieved the next time BB Vault is run.

## Registration

**Don't forget to register your software...**

BB Vault has not yet been registered for use on this computer. To register, complete the form below and click OK. A file named bbvault.rgs will be created in the BB Vault directory. Attach the bbvault.rgs file to an e-mail and send to [register@badgerware.net](mailto:register@badgerware.net). An e-mail response containing your unlock code will be sent within 24 hours (usually much less!).

To unlock the software for full use, enter the unlock code when prompted after clicking Unlock on the Menu. Until then, all features of BB Vault will be available. However, only 250 database cells can be downloaded and/or uploaded.

Registration info

<b>Name:</b>	Joe Customer
<b>Company:</b>	ABC Corp.
Address:	8001 Technology Blvd.
Address:	Dayton, OH 45424
Address:	
Address:	
<b>E-mail:</b>	joe@abccorp.com
Phone:	(937) 555-1212
Fax:	(937) 555-1213
Product:	BB Vault Version 1.0
<b>Serial No:</b>	BBV000
Lock No:	445B 3150 6601 7247

*Note: Fields in red are required.*

OK

Cancel

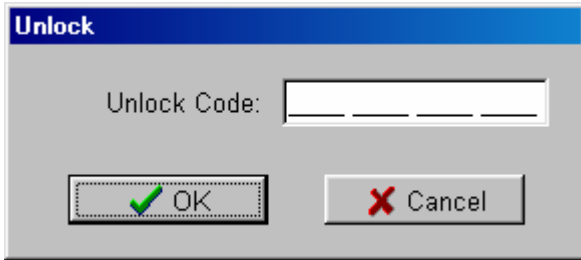
BB Vault must be registered for use on each computer on which it is installed. Until registration is complete and the unlock code has been entered, the registration form will be displayed each time BB Vault is run.

To register, complete the form and click OK. A file named bbvault.rgs will be created in the BB Vault directory. Attach the bbvault.rgs file to an e-mail message and send to [register@badgerware.net](mailto:register@badgerware.net). An e-mail response containing the unlock code (for that particular computer) will be sent within 24 hours. The actual response time will usually be much less than 24 hours depending on what time of day (E.S.T.) the registration is received.

Click Cancel to postpone registration and close the form without creating the bbvault.rgs file.

To redisplay the form without having to restart the program, click Registration on the BB Vault Menu.

**Note:** All features of BB Vault are available prior to registration and entry of the unlock code. However, only 250 database cells can be downloaded and/or uploaded.

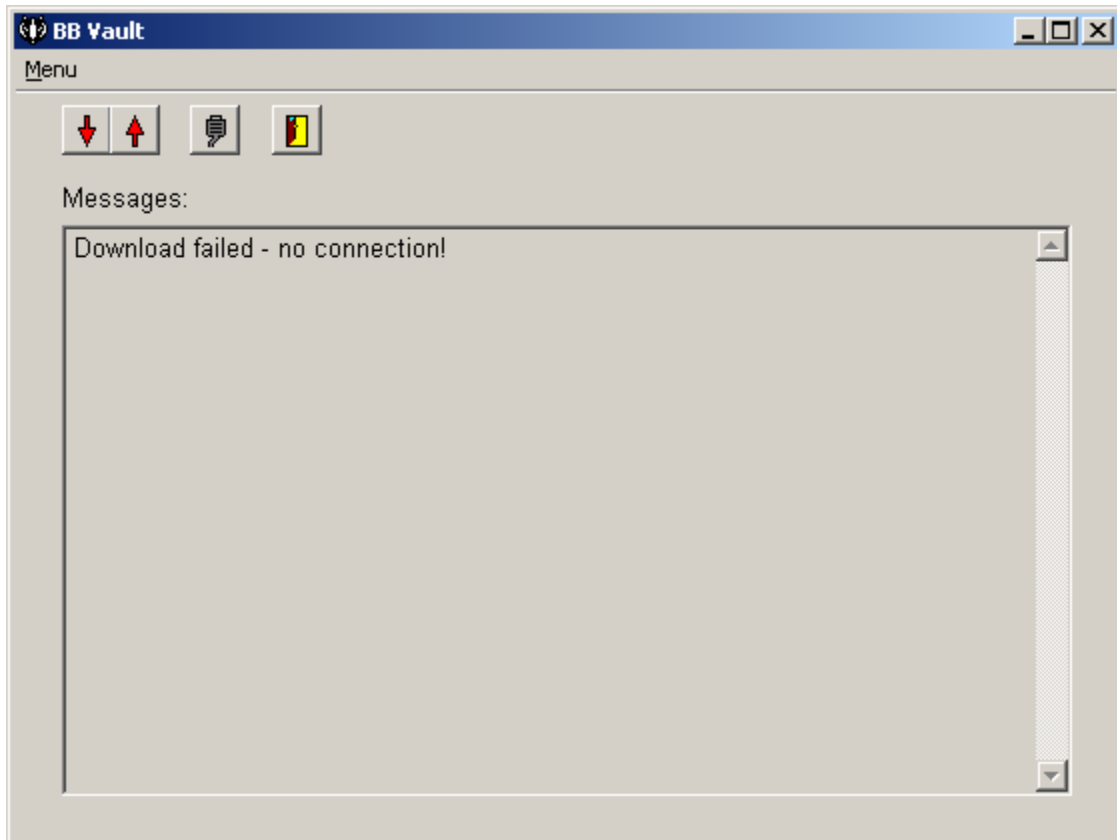


To display the Unlock window, click Unlock on the BB Vault Menu. To unlock the software, enter the unlock code received in the registration e-mail response and click OK.

Click cancel to close the window without attempting to unlock.

## Section 2

## BB Vault Main Page



### Message Window

Error and/or status messages are displayed in the Message Window at the completion of a Download or Upload.

### Menu and Tool Buttons

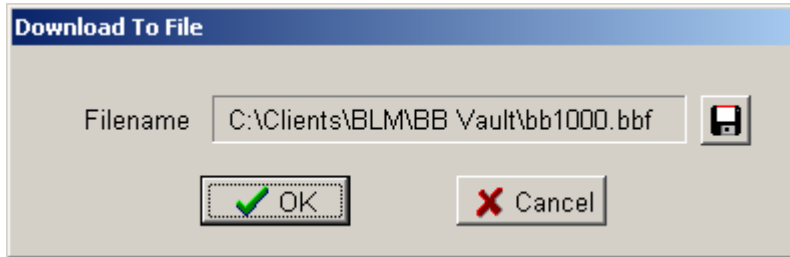
To access the BB Vault Menu, click Menu in the upper left hand corner of the Main Page. Tool Buttons are located along the top of the Main Page and are provided for most of the Menu items.

- |                 |   |
|-----------------|---|
| <b>Download</b> | Click Download to download the “B code” parameter settings from the BB1000 and save them to a file (see Section 3: Download). |
| <b>Upload</b>   | Click Upload to retrieve the “B Code” parameter settings from a file and upload them to the BB1000 (see Section 4: Upload).   |
| <b>ComPort</b>  | Click ComPort to configure the ComPort for communication with the BB 1000 (see Section 5: ComPort Settings).                  |

- Exit** Click Exit to exit from BB Vault.
- About** Click About for information regarding the version of the BB Vault software.

## Section 3

## Download



BB Vault provides the capability to download all programmable “B Code” settings from a BB1000 and save them to a file on a PC.

Click Download on the Main Page to display the Download To File window.

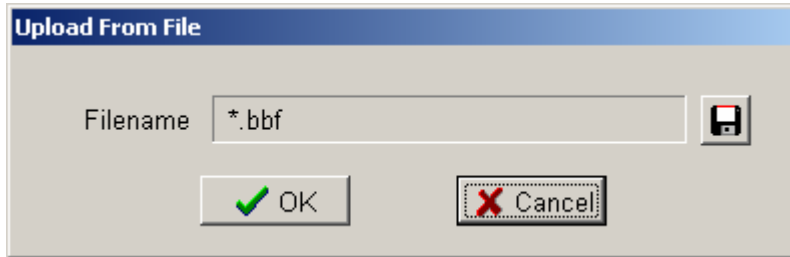
- |                 |  |
|-----------------|--|
| <b>Filename</b> | Click the File button to access the Save As dialog which will then prompt for the filename. The specified filename will then be displayed in the Filename panel. |
| <b>OK</b>       | Click OK to begin the download. A progress bar will then be displayed. Click Abort to terminate.   |
| <b>Cancel</b>   | Click Cancel to exit without downloading.  |

Success or failure of the download will be displayed in the Message Window on the Main Page (e.g., **Download to C:\BB Vault\bb1000.bbf complete.**).



## Section 4

## Upload

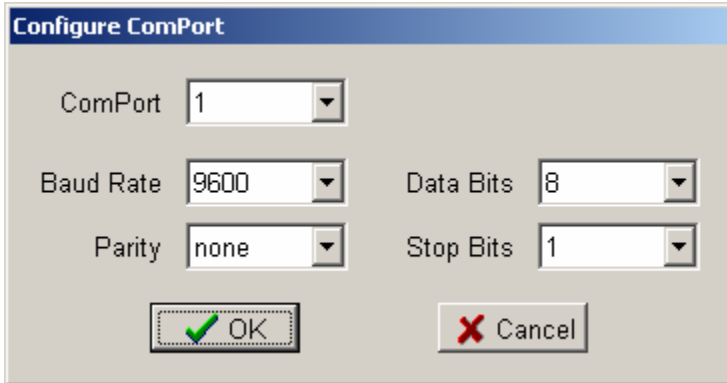


BB Vault provides the capability to retrieve saved “B Code” parameter settings from a file and then upload them to a BB1000.

Click Upload on the Main Page to display the Upload From File window.

- |                 |  |
|-----------------|--|
| <b>Filename</b> | Click the File button to access the Select File To Load dialog which will then prompt for the filename. The selected filename will then be displayed in the Filename panel.. |
| <b>OK</b>       | Click OK to begin the upload. A progress bar will then be displayed. Click Abort to terminate.   |
| <b>Cancel</b>   | Click Cancel to exit without uploading.  |

Success or failure of the upload will be displayed in the Message Window on the Main Page (e.g., **Upload of C:\BB Vault\bb1000.lvf complete.**).

**Section 5****ComPort Settings**

Click ComPort on the Main Page to display the Configure ComPort window.

The displayed settings are for the PC's ComPort. These settings must match those of the BB1000 in order for the processor to properly communicate with BB Vault.

ComPort settings are saved to disk and retrieved the next time BB Vault is run.

<b>ComPort</b>	Specifies the ComPort of the PC to which the BB1000 is connected.  <b>Note:</b> Be sure to connect to serial port CON8 of the BB1000.
<b>Baud Rate</b>	Specifies the baud rate of the serial communication between the PC and the Beta BB1000 (1200, 2400, 4800, 9600, 19200, 38400, 57600, or 115200).
<b>Parity</b>	Specifies the parity for the serial communication between the PC and the BB1000 (none, odd, or even).
<b>Data Bits</b>	Specifies the number of data bits for the serial communication between the PC and the BB1000 (7 or 8).
<b>Stop Bits</b>	Specifies the number of stop bits for the serial communication between the PC and the BB1000 (1 or 2).

To accept any changes made to the ComPort settings, click OK.

To exit without changing the ComPort settings, click Cancel.