

Library Vault Operator's Manual

Table of Contents

Section 1: Introduction	1
Introduction.....	1
Installation.....	1
Running Library Vault for the First Time.....	1
Registration.....	2
Section 2: Library Vault Main Page.....	4
Message Window.....	4
Model No.	4
Menu and Tool buttons	5
Section 3: Download	6
Section 4: Upload	7
Section 5: Change Library	9
Section 6: Configure Communications	10
Section 7: Manage IP Address List.....	12
Section 8: Language Setting	13

Section 1

Introduction

Introduction

Library Vault provides the capability to download all programmable library settings from a Beta LaserMike processor and save them to a file on a PC. Saved library settings can then be retrieved from the file and uploaded back to the Beta LaserMike processor.

Installation

Although Library Vault creates a number of files when it is run, there is only one file needed for installation. To install the Library Vault software, create a directory on the C: drive named C:\Library Vault and copy the file named LibraryVault.Exe to that directory

To run Library Vault click Run on the Windows Start Menu and select C:\Library Vault\LibraryVault.Exe, double click C:\Library Vault\LibraryVault.exe from within Windows Explorer, or create and use a shortcut on the Windows desktop.

Refer to the Beta LaserMike Processor Operator's Manual for connection of the processor to ComPort 1 or 2 on the PC.

Running Library Vault for the First Time

The first time Library Vault is run, the Select Language window will automatically be displayed to allow for selection of the language for displayed text (see Section 7: Language Setting).

The first time Library Vault is run, the communication parameters of the PC are defaulted to ComPort 1, 9600 baud, no parity, 8 data bits, and 2 stop bits (see Section 6: ComPort Settings).

Be sure to match the Beta LaserMike processor serial port configuration (refer to the processor's Operator's Manual) to the ComPort settings of Library Vault.

Any changes made to the Library Vault ComPort Settings will be saved to disk and retrieved the next time Library Vault is run.

Registration

Don't forget to register your software...

Library Vault has not yet been registered for use on this computer. To register, complete the form below and click OK. A file named libvault.rgs will be created in the Library Vault directory. Attach the libvault.rgs file to an e-mail and send to register@badgerware.net. An e-mail response containing your unlock code will be sent within 24 hours (usually much less!).

To unlock the software for full use, enter the unlock code when prompted after clicking Unlock on the Menu. Until then, all features of Library Vault, with the exception of Upload and Block Download, will be available.

Registration info

Name:	Joe Customer
Company:	ABC Corp.
Address:	8001 Technology Blvd
Address:	Dayton, OH 45424
Address:	
Address:	
E-mail:	joe@abccorp.com
Phone:	(937) 555-1212
Fax:	(937) 555-1213
Product:	Library Vault Version 5.0
Serial No:	LV000100
Lock No:	3554 3757 1523 2D0E

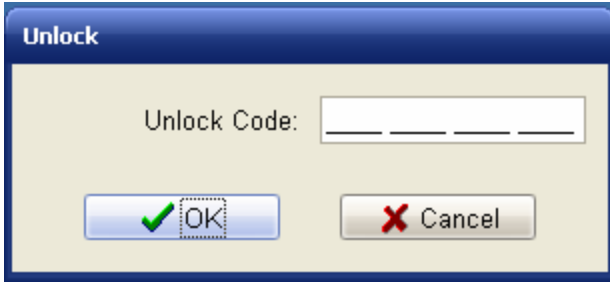
Library Vault must be registered for use on each computer on which it is installed. Until registration is complete and the unlock code has been entered, the registration form will be displayed each time Library Vault is run.

To register, complete the form and click OK. A file named libvault.rgs will be created in the Library Vault directory. Attach the libvault.rgs file to an e-mail message and send to register@badgerware.net. An e-mail response containing the unlock code (for that particular computer) will be sent within 24 hours. The actual response time will usually be much less than 24 hours depending on what time of day (E.S.T.) the registration is received.

Click Cancel to postpone registration and close the form without creating the libvault.rgs file.

To redisplay the form without having to restart the program, click Registration on the Library Vault Menu.

Note: All features of Library Vault, with the exception of Upload and Block Download, are available prior to registration and entry of the unlock code.

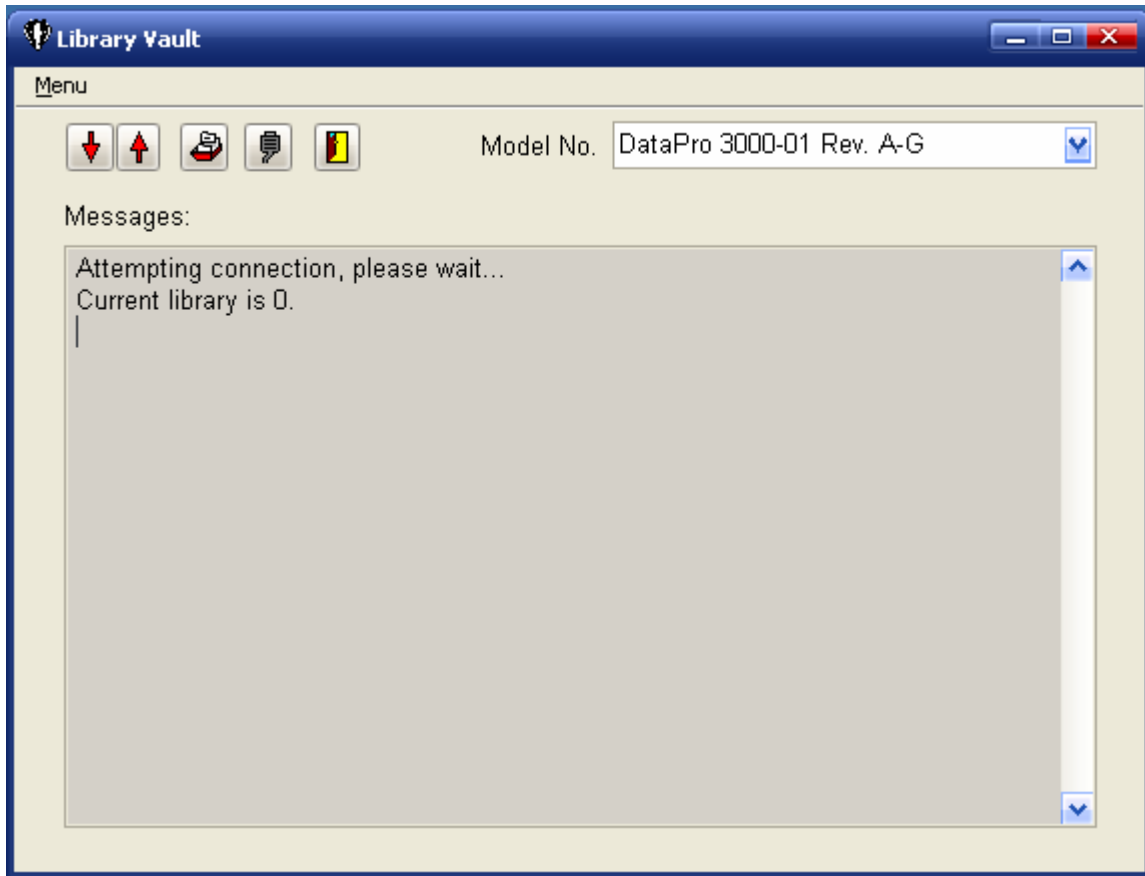


To display the Unlock window, click Unlock on the Library Vault Menu. To unlock the software, enter the unlock code received in the registration e-mail response and click OK.

Click cancel to close the window without attempting to unlock.

Section 2

Library Vault Main Page



Message Window

Each time Library Vault is run, the Beta LaserMike processor is queried for the current library number. When a response is received, the library number is displayed in the Message Window (e.g., **Current Library is 0.**). If no response is received within two seconds (e.g., due to no physical connection, incorrect communication settings, or improperly selected Model No.), **Current library is ??? - no connection!** is displayed in the message window.

Additional messages are displayed in the Message Window at the completion of a Download, Upload, or Library Change.

Model No.

Different models of Beta LaserMike processors have different programmable library settings and, in some cases, completely different serial protocols. To ensure compatible communication with the processor and to make sure all library settings are downloaded, select the appropriate Beta LaserMike model number from the drop down list.

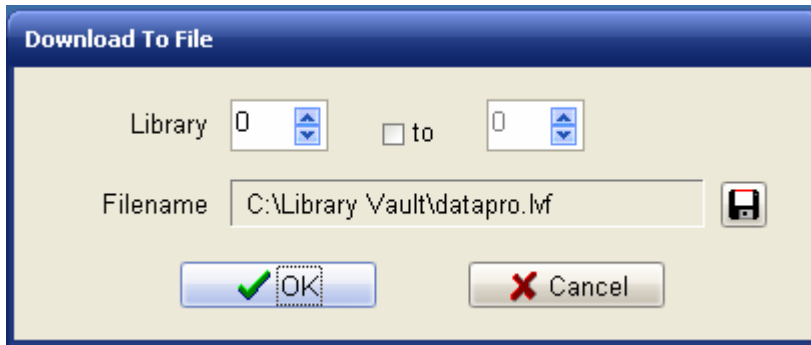
Menu and Tool Buttons

To access the Library Vault Menu, click Menu in the upper left hand corner of the Main Page. Tool Buttons are located along the top of the Main Page and are provided for most of the Menu items.

Download	Click Download to download all library settings from the Beta LaserMike processor and save them to a file (see Section 3: Download).
Upload	Click Upload to retrieve library settings from a file and upload them to the Beta LaserMike processor (see Section 4: Upload).
Library	Click Library to change the current library of the Beta LaserMike processor (see Section 5: Change Library).
ComPort	Click ComPort to configure the ComPort for communication with the Beta LaserMike processor (see Section 6: ComPort Settings).
Language	Click Language to change the language of the displayed text. (see Section 7: Language Setting).
Exit	Click Exit to exit from Library Vault.
About	Click About for information regarding the version of the Library Vault software.

Section 3

Download



Library Vault provides the capability to download all programmable library settings from a Beta LaserMike processor and save them to a file on a PC.

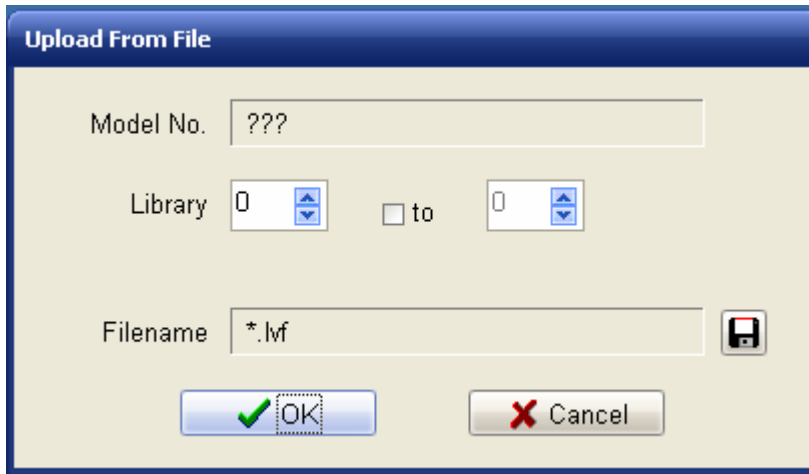
Click Download on the Main Page to display the Download To File window.

- Library** The current library of the Beta LaserMike Processor is initially displayed. To change libraries before downloading, select the desired new library number.
- Note:** To specify a block of libraries to download click the “to” checkbox and select the ending library number.
- Filename** Click the File button to access the Save Library As dialog which will then prompt for the filename. The specified filename will then be displayed in the Filename panel.
- Note:** When a block of libraries has been specified for download, each library number will automatically be added to the filename just before the .lvf extension (e.g. datapro 000.lvf, datapro 001.lvf, etc.).
- OK** Click OK to begin the download. A progress bar will then be displayed. Click Abort to terminate.
- Note:** If a download from a 283 BenchMike is aborted, the 283 will continue to transmit the rest of the library file. Until it is finished, the 283 will not respond to new commands from Library Vault.
- Cancel** Click Cancel to exit without downloading.

Success or failure of the download will be displayed in the Message Window on the Main Page (e.g., **Download of library 0 to C:\Library Vault\datapro.lvf complete.**).

Section 4

Upload



Library Vault provides the capability to retrieve saved library settings from a file and then upload them to a Beta LaserMike processor.

Click Upload on the Main Page to display the Upload From File window.

Model No. Until a filename is selected, ??? is displayed for Model No. Once a filename has been selected, the model number that was specified during the download to the file is displayed. This can be used as a check to make sure that saved library settings are being uploaded to the correct Beta LaserMike processor model.

Library The current library of the Beta LaserMike Processor is initially displayed. To change libraries before uploading, select the desired new library number.

Note: To specify a block of libraries to upload click the “to” checkbox and select the ending library number.

Filename Click the File button to access the Select File To Load dialog which will then prompt for the filename. The selected filename will then be displayed in the Filename panel and the saved model number will be displayed in the Model No. panel.

Note: When a block of libraries has been specified for upload, a filename with a library number embedded (e.g., datapro 002.lvf, not datapro.lvf) must be specified. Library Vault will automatically sequence to the next filename for each library in the specified block.

Include Cal Data

The Include Cal Data checkbox will only appear when the Model No selected on the Main Page is 283 BenchMike. Check this box to include the Common library data in the upload. The Common library data includes Calibration, Linearization and Jog Values. Therefore, be sure to upload Cal data only to the BenchMike from which it was originally downloaded.

Also, the Cal data is common to all libraries on a BenchMike. Therefore, when uploading to multiple libraries, the Cal data only needs to be uploaded once.

OK

Click OK to begin the upload. A progress bar will then be displayed. Click Abort to terminate.

Note: If an upload to a 283 BenchMike is aborted, the 283 will continue to wait for the rest of the library file. The 283 will have to be powered off and then on again to resume normal serial operation.

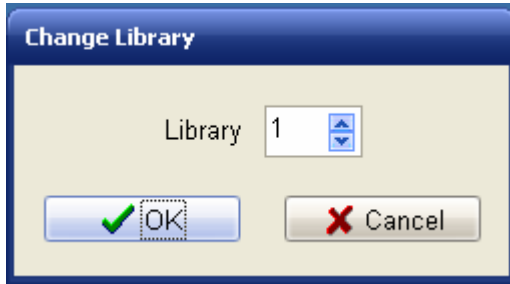
Cancel

Click Cancel to exit without uploading.

Success or failure of the upload will be displayed in the Message Window on the Main Page (e.g., **Upload of C:\Library Vault\datapro.lvf to library 1 complete.**).

Section 5

Change Library



Click Library on the Main Page to display the Change Library window.

- | | |
|----------------|---|
| Library | The current library of the Beta LaserMike Processor is initially displayed. To change libraries, select the desired new library number. |
| OK | Click OK to change libraries. |
| Cancel | Click Cancel to exit without changing libraries. |

The new library number will be displayed in the Message Window on the Main Page (e.g., **Current library is 2.**).

Section 6 Configure Communications

The screenshot shows a dialog box titled "Configure Communications". It has two main sections: "Ethernet" and "Serial". The "Ethernet" section is currently unselected (radio button is off) and contains an "IP Address" text box and an "Edit List" button. The "Serial" section is selected (radio button is on) and contains five dropdown menus: "COM Port" (set to 3), "Baud Rate" (set to 9600), "Data Bits" (set to 8), "Parity" (set to none), and "Stop Bits" (set to 1). At the bottom of the dialog are "OK" and "Cancel" buttons.

Click Communications on the Main Page to display the Configure Communications window.

The displayed settings are for the PC. These settings must match those of the Beta LaserMike processor in order for the processor to properly communicate with Library Vault.

Communication settings are saved to disk and retrieved the next time Library Vault is run.

Ethernet communication is provided for connection to a Beta LaserMike DataPro 3100 processor. Use Serial communication for all other processor models.

Ethernet

- IP Address** Select the IP Address of the DataPro 3100.
- Edit List** Click Edit List to display the Manage IP Address List window.

Serial

COM Port	Specifies the COM Port of the PC to which the Beta LaserMike processor is connected.
Baud Rate	Specifies the baud rate of the serial communication between the PC and the Beta LaserMike processor (1200, 2400, 4800, 9600, 19200, 38400, 57600, or 115200).
Parity	Specifies the parity for the serial communication between the PC and the Beta LaserMike processor (none, odd, or even).
Data Bits	Specifies the number of data bits for the serial communication between the PC and the Beta LaserMike processor (7 or 8).
Stop Bits	Specifies the number of stop bits for the serial communication between the PC and the Beta LaserMike processor (1 or 2).

To accept any changes made to the Communication settings, click OK.

To exit without changing the Communication settings, click Cancel.

Section 7

Manage IP Address List

Manage IP Address List

IP Address

Name

IP Address List:

192.168.40.49 - Line #1
192.168.40.50 - Line #2

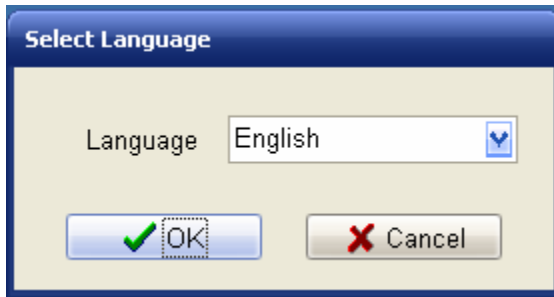
Buttons: Add, Move Up, Move Down, Delete, OK, Cancel

Click Edit List on the Configure Communications window to display the Manage IP Address List window.

- IP Address** Enter the IP Address of the DataPro 3100.
- Name** Enter an optional name for the DataPro 3100.
- Add** Click Add to add the entry to the list.
- IP Address List** The current list of IP addresses is displayed.
- Move Up** Click Move Up to move the highlighted address up one spot in the list.
- Move Down** Click Move Down to move the highlighted address down one spot in the list.
- Delete** Click Delete to delete the highlighted address from the list.

Section 8

Language Setting



Click Language on the Main Page to display the Select Language window.

Language Specifies the language in which all text within Library Vault will be displayed.

To accept a change made to the Language setting, click OK. The Language setting will be saved to disk and retrieved the next time Library Vault is run.

To exit without changing the Language setting, click Cancel.